

# HYMENOLEPIS NANA

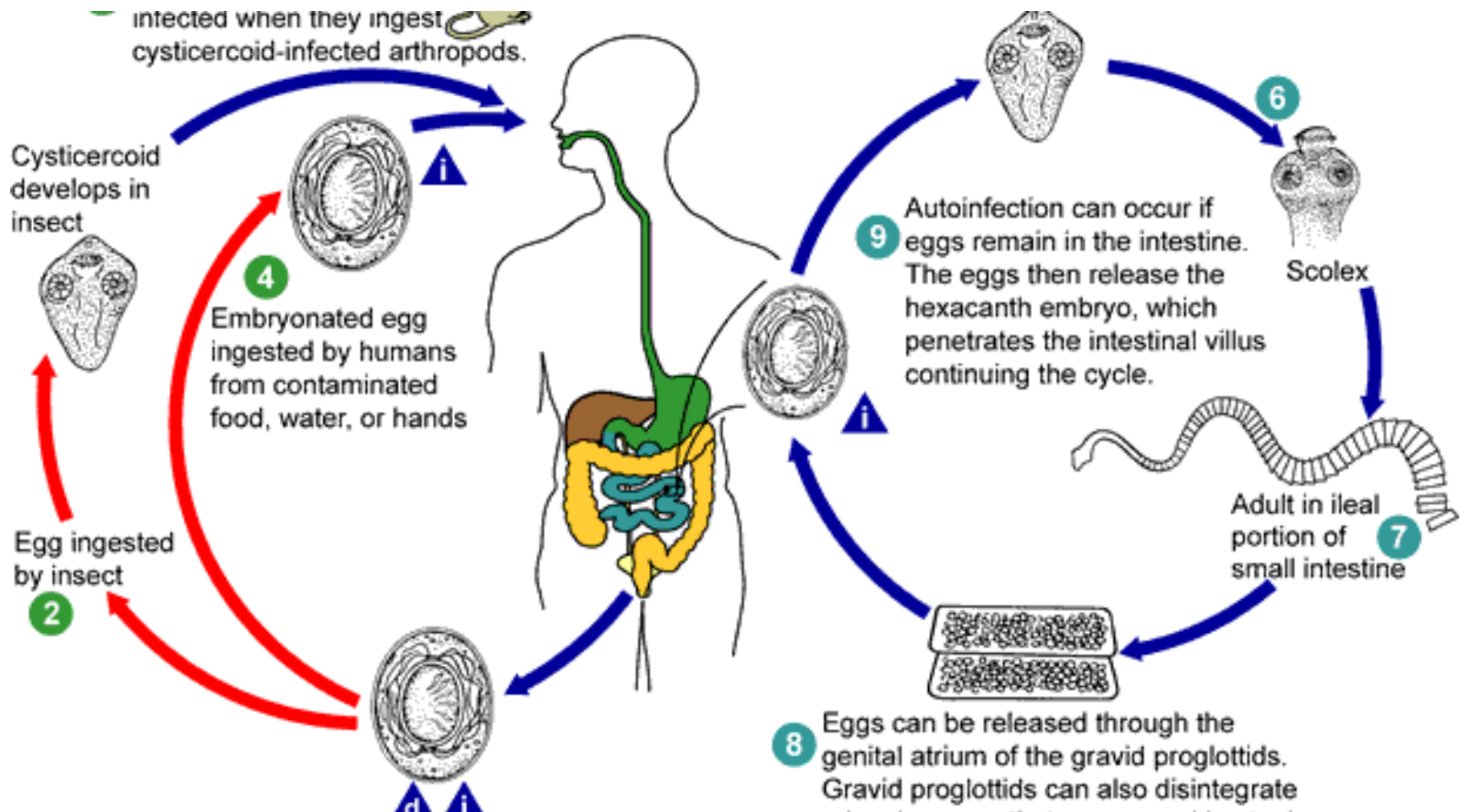
- Smallest cestode : dwarf tapeworm
- Hymenolepis refers to thin membrane covering the egg
- MORPHOLOGY
- 2.5-4cm in length – Adult worm
- Resides in S.I
- Consists of head, neck, strobila
- Head- globular with 4 suckers, rostellum with single row of 20-30 hooklets.
- Neck – long, proglottids
- Strobilla – 200 segments of mature proglottids
- Egg – infective & diagnostic form

- Round to oval 30-47 $\mu$ m size
- 2 membranes and an oncosphere with 6 hooklets
- Non bile stained
- LARVA- cysticercoid

# Life cycle

- Direct
- Host – man is the only host
  - no intermediate host
  - Rodents are other hosts
- Infective form- eggs
- MOT – ingestion of contaminated food & water
  - autoinfection
- INDIRECT-
- Host – man is the definitive host
  - insects intermediate hosts
- MOT-

# Hymenolepis nana life cycle



# TREATMENT

Praziquantel

Nitazoxanide

Niclosamide

## PREVENTION

Good personal hygiene  
sanitation